



Birmingham Early Years Network

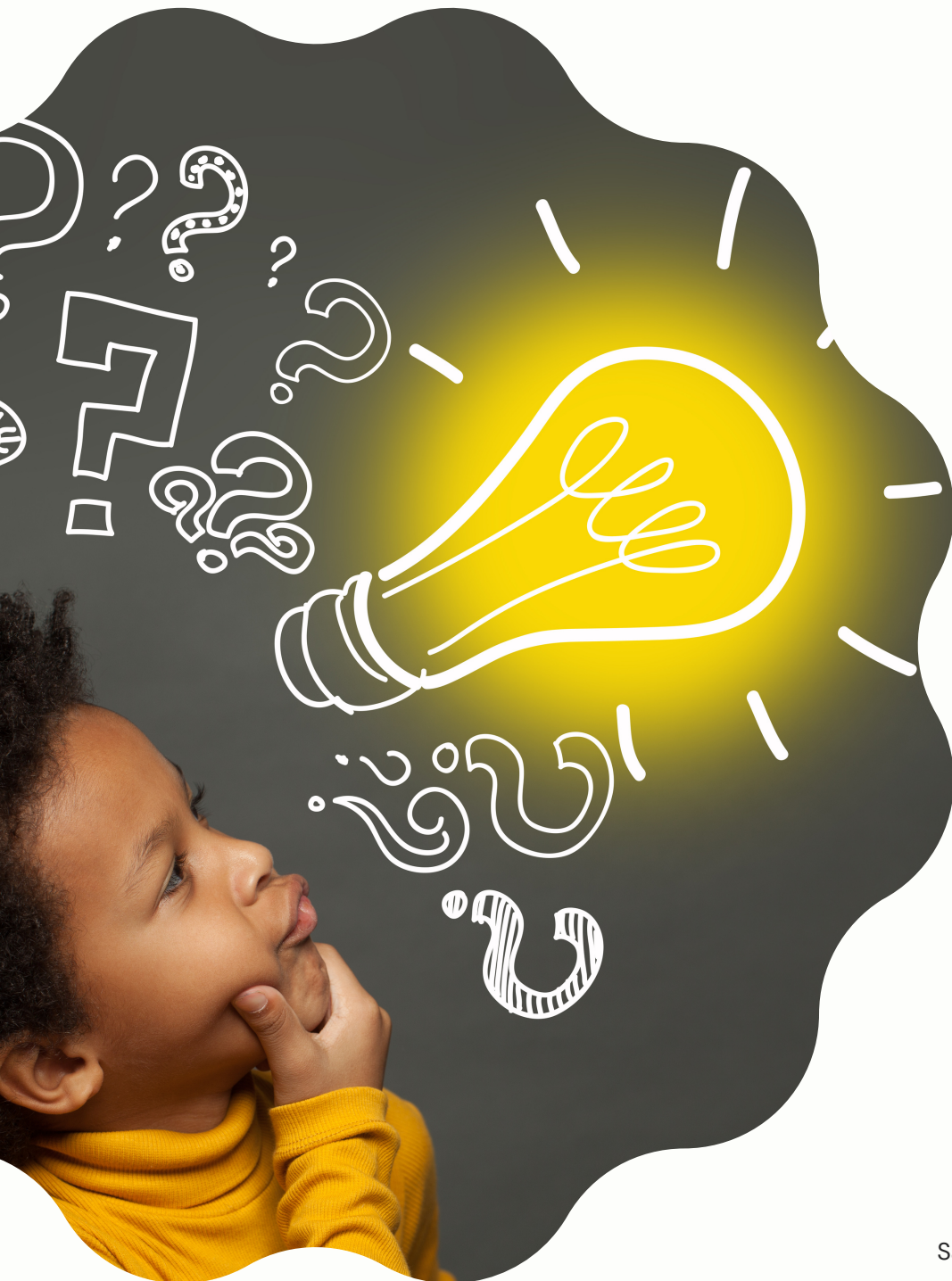
FORWARD TOGETHER FOR THE CHILDREN OF BIRMINGHAM



Mathematics Reflection on practice

produced in partnership with





Prompts for reflection with your team

How do we show that we are aware of typical development progressions in mathematics?

How do we demonstrate our awareness of the non-linear nature of learning mathematics and use this knowledge to support children's development?

Do we dedicate time every day for purposeful mathematical activity?

How do we plan to ensure that we take advantage of everyday activities and routines to support mathematical development throughout the year and adapt our approach for individual children?

How do we use story books to discuss mathematical concepts?

Reflections on our practice

What do we do well? What might we develop further?

A large, hand-drawn green rectangular box with a double-line border, intended for writing reflections. The box is empty and occupies most of the page below the text.

Date

Useful links



Improving mathematics in the early years and key stage 1 - Education Endowment Foundation [EEF]
<https://educationendowmentfoundation.org.uk/education-evidence/guidance-reports/early-maths>



Learning and Teaching with Learning Trajectories
www.learningtrajectories.org



Early Childhood Maths Group
<https://earlymaths.org/>



DfE Help for early years providers - mathematics
<https://help-for-early-years-providers.education.gov.uk/mathematics>



DfE Early years child development training - module 6 Mathematics
<https://child-development-training.education.gov.uk/about/module-6>