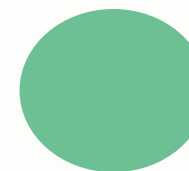




Partner and project updates

Summer 2024

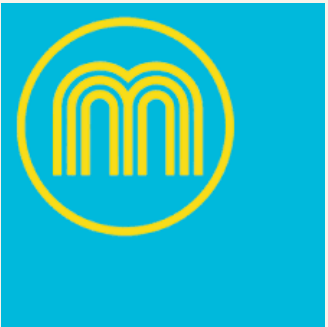




What's available for you this summer?



Nurturing Staff Wellbeing – including your own [Morning or Evening session]



Makaton Level 1 [Saturday or Wednesday options]



Practice from the Heart
Tour and talk visits to SPH lead settings



Evening training opportunity

West Midlands Childminder Network

Ongoing CPD opportunities:

- **DfE Early Years Child Development Training** [online start anytime]
- **DfE National Professional Qualification Early Years Leadership** – apply NOW for the next cohort

[Click here to find out more](#)





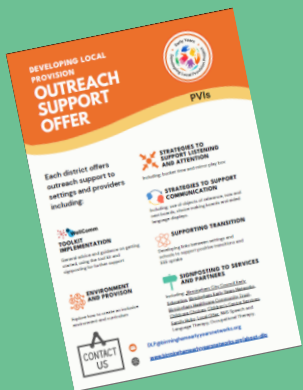
Early Years Developing Local Provision [DLP] Phase 2

CONTACT YOUR DISTRICT DLP TEAM FOR MORE INFORMATION
(Name of District) DLP@birminghamearlyyearsnetworks.org
[Birmingham Early Years Networks | Developing Local Provision](#)

Outreach Support Offer

Each District offers outreach to families and early years providers including:

- WellComm Toolkit implementation*
- Advice and support on developing an inclusive environment*
- Strategies to support listening and attention*
- Transition support*
- Accessing funded nursery hours*
- Signposting to services and professionals*



Early years practitioners from across the sector have worked collaboratively to develop resources for settings and parents around transition. Head to [Ready Steady Reception](#) to download from the website.

Supporting a Smooth Transition to Reception.

An opportunity to discuss transition for every child moving to a Reception class in September 2024. Find out when your District event is taking place via [this link](#)



BCC Team updates

Managers Let's Talk



Summer 1: Monday 13th May 2024

Summer 2: Monday 24th June 2024



Upcoming SEN Support Plan and Inclusion Support Early Years (ISEY) Workshops:

Sue Bristow Area SENCo from the Early Years Inclusion Support Team will deliver the workshops below.

SEN Support Plan Workshops:

Thursday 9th May 2024 6pm – 7.30pm [Booking form](#) or use the QR to reserve a place .



ISEY Workshops:

Tuesday 14th May 2024 6pm – 7.30pm [Booking form](#) or use the QR to reserve a place



PAGE 4



Speech and Language UK



Early Talk Boost Training

Early Talk Boost training is now available for practitioners in Hodge Hill, Ladywood, Hall Green, Northfield and Erdington. As the Family Hubs open in each district we will continue to roll the training out to all practitioners in all districts.



Birmingham Transition Cluster Events
Summer 2024 will be held in all 10 districts

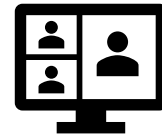


Safeguarding:

The safeguarding self-assessment audits final submission date is 30th April 2024.

Upcoming DSL sessions

- Tuesday 21st May – 9.15am – 10.15am
- Wednesday 22nd May – 2pm – 3pm
- Wednesday 22nd May – 6pm – 7pm
- Thursday 23rd May – 12pm – 1pm



Upcoming CPD workshops:

- Aiming for a successful Ofsted inspection
- Transition
- WellComm Part 1: Introduction to WellComm
- WellComm Part 2: WellComm What Next?



Startwell

New Startwell training for May – August has been advertised. To book on training go onto our website:
[Events from August 21 – May 14 – Startwell 2020 \(startwellbirmingham.co.uk\)](http://startwellbirmingham.co.uk)

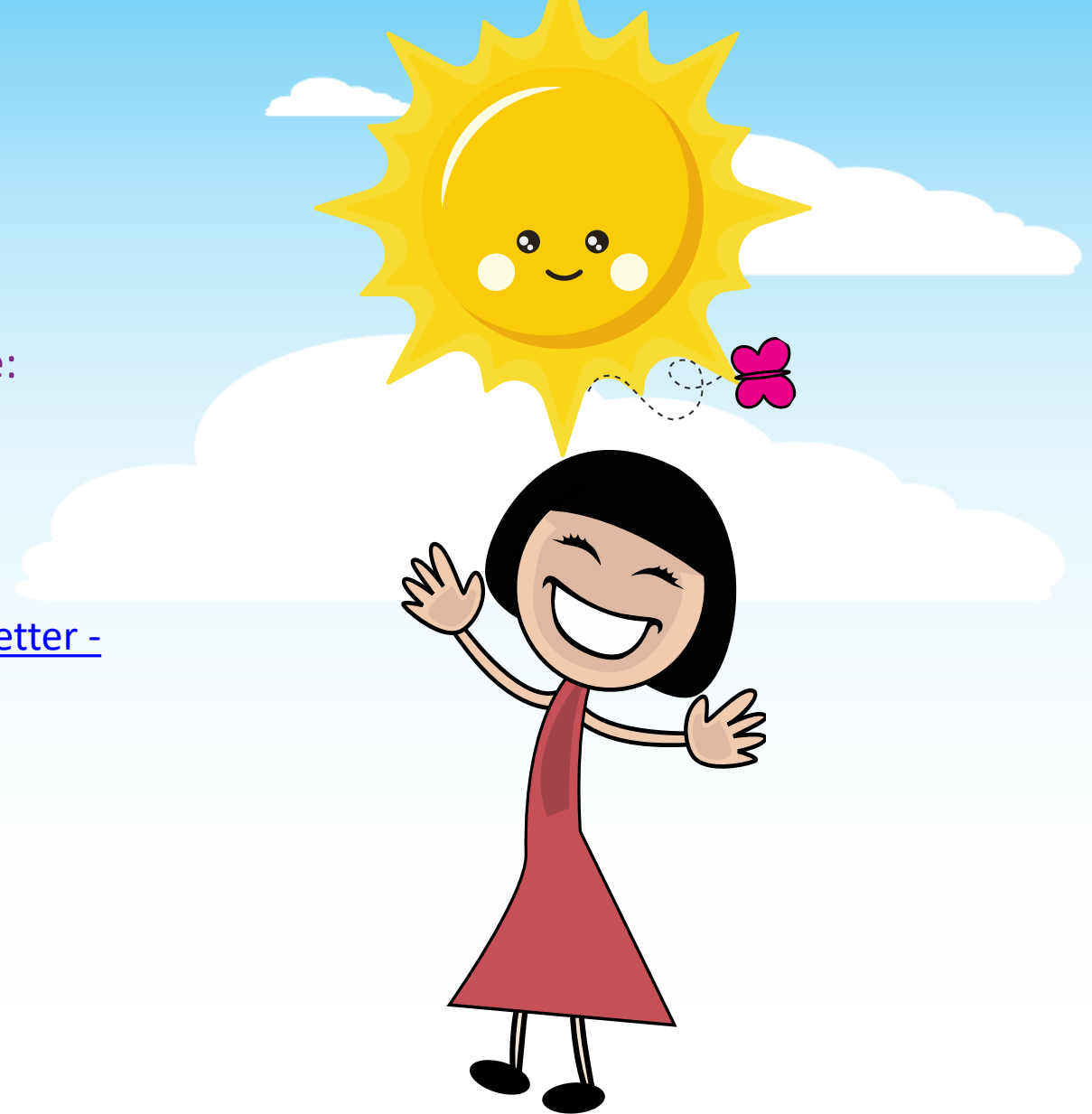
To keep up to date on the latest Startwell news and evidence, sign up to our **newsletter**: [Startwell Newsletter - Startwell 2020 \(startwellbirmingham.co.uk\)](http://startwellbirmingham.co.uk)

Stay in touch:

Email: bchc.startwell@nhs.net

Tel: 0121 683 2303

Website: www.startwellbirmingham.co.uk





Birmingham Forward Steps Children's Centres

Find out what's happening at your **local children's centre**

Stay and plays, parenting support, antenatal, healthy eating and more...

FIND OUT MORE

www.birminghamearlyyearsnetworks.org/get-to-know-your-district

50 Things to do Before You're 5 in Birmingham

FREE app for families
Download the poster
+ share



Contact the 50 Things Brum Team if you would like more information and advice about how to promote this in your setting
50things@birminghamearlyyearsnetworks.org



Funded by
BEYN and
Family Hubs
Birmingham

